

Revelation

Character to OpenInsight Installation Guide



REVELATION
S O F T W A R E
A Division of Revelation Technologies, Inc.

COPYRIGHT NOTICE

© 2006 Revelation Technologies, Inc. All rights reserved.

No part of this publication may be reproduced by any means, be it transmitted, transcribed, photocopied, stored in a retrieval system, or translated into any language in any form, without the written permission of Revelation Technologies, Inc.

SOFTWARE COPYRIGHT NOTICE

Your license agreement with Revelation Technologies, Inc. authorizes the conditions under which copies of the software can be made and the restrictions imposed on the computer system(s) on which they may be used. Any unauthorized duplication or use of any software product produced by Revelation Technologies, Inc., in whole or in part, in any manner, in print or an electronic storage-and-retrieval system, is strictly forbidden.

TRADEMARK NOTICE

OpenInsight is a registered trademark of Revelation Technologies, Inc.

Advanced Revelation is a registered trademark of Revelation Technologies, Inc.

OpenInsight for Workgroups is a registered trademark of Revelation Technologies, Inc. Revelation Reporter is a trademark of Revelation Technologies, Inc.

Microsoft and Windows are registered trademarks of Microsoft Corporation in the USA and other countries.

All other product names are trademarks or registered trademarks of their respective owners.

Part No. 125-825

Printed in the United States of America.

Table Contents

INTRODUCTION.....	4
PREREQUISITES.....	4
COMPONENTS	6
<i>RevCmd.....</i>	<i>6</i>
<i>Oesocketserver.Jar.....</i>	<i>6</i>
<i>OeTelnetServer.Jar.....</i>	<i>7</i>
OENGINESERVER SERVICE.....	9
OETELNETSERVER SERVICE	9
INSTALLING THE SOFTWARE.....	11
RUNNING THE SOFTWARE.....	12

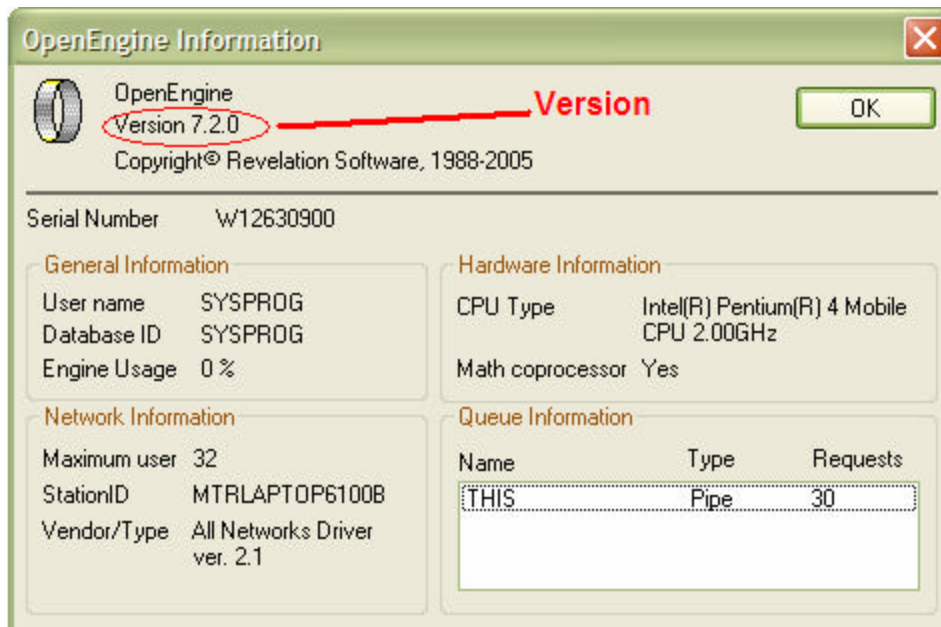
Introduction

The Character to OpenInsight (CTO) tool allows users and developers to run green-screen based MultiValue applications in a VT100-compliant console application powered by OpenInsight. The CTO code is built into OpenInsight, but requires some external set up.

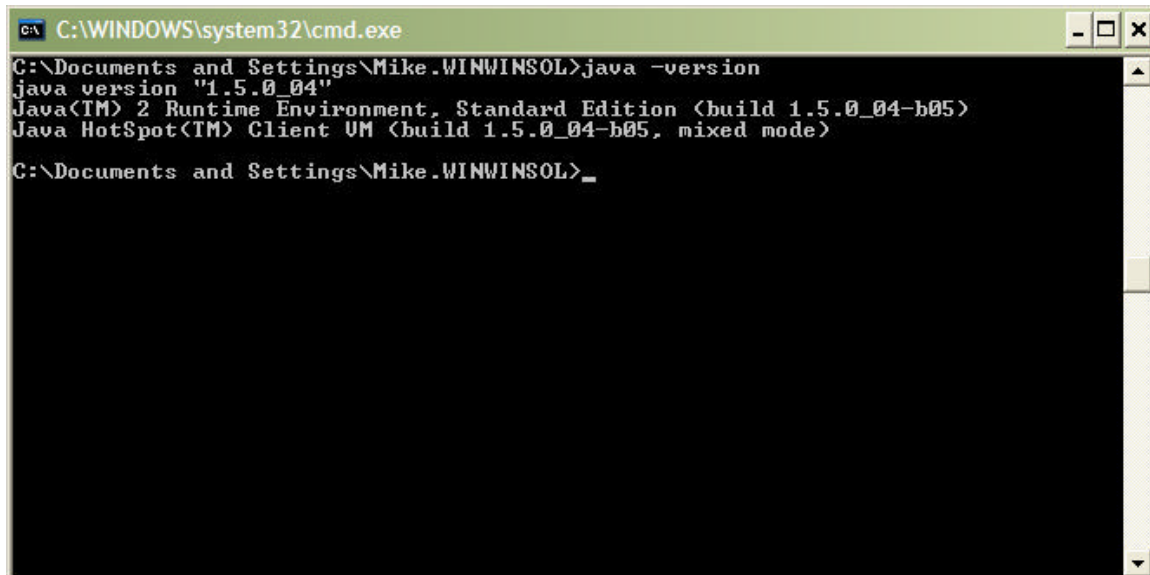
The components of the CTO are the RevCmd executable, a connection to OpenInsight via the OpenEngine Server (“OEngineServer”, running as a java application or a Windows-based service), and OpenInsight. However, before just jumping into the software, there are some prerequisites that need to be met first.

Prerequisites

The CTO requires that you are running OpenInsight version 7.2 or higher. Your version of OpenInsight can be found by clicking on the EngineInfo button found on the OpenEngine window. When the Engine Info window appears, the version can be found in the upper left-hand corner, as seen below:



It also requires that you have installed the Java runtime engine version 1.5.0_04 or higher. You can determine the version of Java that you are running by typing **java -version** at a command line, as seen below:

A screenshot of a Windows command prompt window. The title bar reads 'C:\WINDOWS\system32\cmd.exe'. The command prompt shows the user's current directory as 'C:\Documents and Settings\Mike.WINWINSOL'. The user has entered the command 'java -version', and the output is displayed as follows:

```
C:\Documents and Settings\Mike.WINWINSOL>java -version
java version "1.5.0_04"
Java(TM) 2 Runtime Environment, Standard Edition (build 1.5.0_04-b05)
Java HotSpot(TM) Client VM (build 1.5.0_04-b05, mixed mode)
C:\Documents and Settings\Mike.WINWINSOL>_
```

You can download the Java runtime environment at <http://java.sun.com> (J2SE 5.0).

Finally, the CTO works as its own development and runtime environment, so an application could be created from scratch. However, it is expected that most systems that will be using the CTO will be installed using an ACCOUNT-RESTORE. The CTO requires that the virtual tape files be in either R83 or D3 format.

Components

The following pages describe the components used by the CTO and how to install and configure them.

RevCmd

RevCmd is an executable found in the RevCmd subdirectory under the root OpenInsight subdirectory. There should be three files in the RevCmd directory - RevCmd.exe, login.txt, and logout.txt.

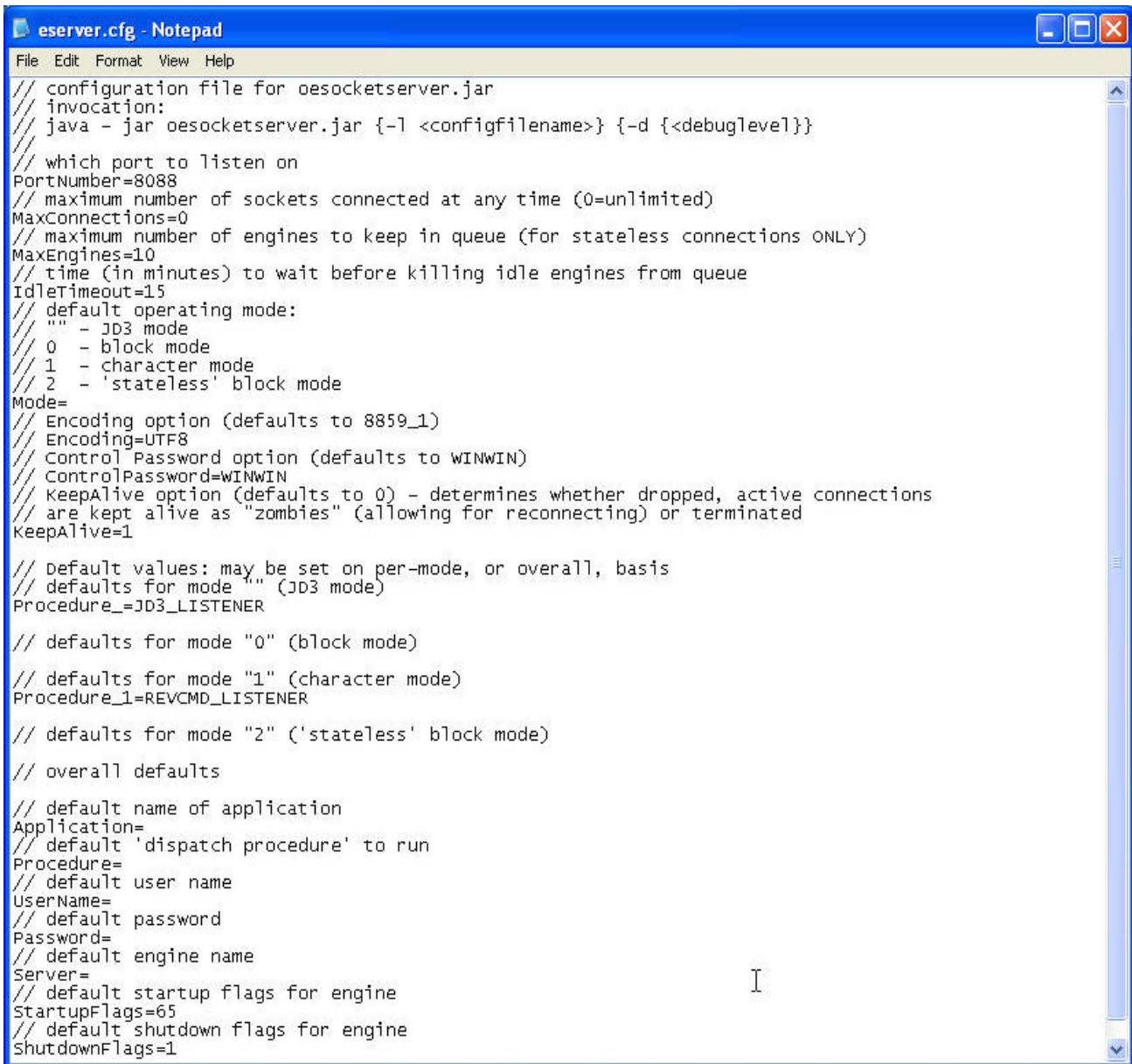
The login.txt file contains the login screen and header that will be displayed when a RevCmd session is started. Conversely, logout.txt contains a message that is displayed when a RevCmd session has concluded.

While the RevCmd executable may be run as a 'stand-alone' executable, its functionality is also available through two OpenInsight forms. The CTO_STANDALONE_FORM is designed to provide a CTO interface in a standalone OpenInsight form, and the CTO_CHILD_FORM is designed to be used in other OpenInsight forms as a child window.

Oesocketserver.Jar

The Oesocketserver.jar is used when the OEngineServer service is not used. This file must be located in the same subdirectory in which OpenInsight is installed. This program provides the communication path between the RevCmd executable and OpenInsight.

The jar file uses the contents of the eserver.cfg file, also found in the directory in which OpenInsight is installed, to establish the communications. A sample of an eserver.cfg file is seen below:



```

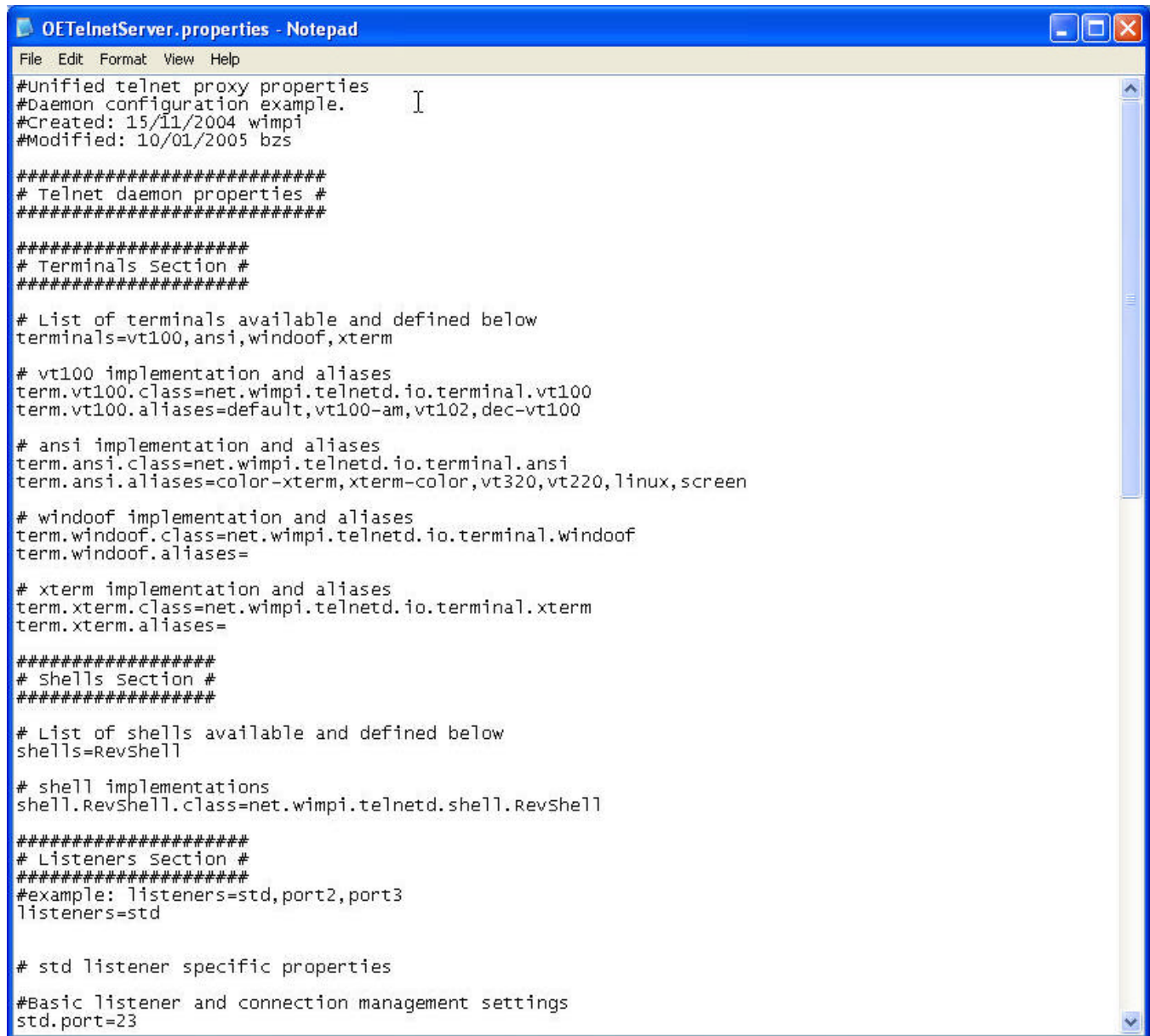
eserver.cfg - Notepad
File Edit Format View Help
// configuration file for oesocketserver.jar
// invocation:
// java - jar oesocketserver.jar [-l <configfilename>] {-d {<debuglevel>}}
//
// which port to listen on
PortNumber=8088
// maximum number of sockets connected at any time (0=unlimited)
MaxConnections=0
// maximum number of engines to keep in queue (for stateless connections ONLY)
MaxEngines=10
// time (in minutes) to wait before killing idle engines from queue
IdleTimeout=15
// default operating mode:
// "" - JD3 mode
// 0 - block mode
// 1 - character mode
// 2 - 'stateless' block mode
Mode=
// Encoding option (defaults to 8859_1)
// Encoding=UTF8
// Control Password option (defaults to WINWIN)
// ControlPassword=WINWIN
// KeepAlive option (defaults to 0) - determines whether dropped, active connections
// are kept alive as "zombies" (allowing for reconnecting) or terminated
KeepAlive=1
//
// default values: may be set on per-mode, or overall, basis
// defaults for mode "" (JD3 mode)
Procedure_=""_JD3_LISTENER
//
// defaults for mode "0" (block mode)
//
// defaults for mode "1" (character mode)
Procedure_1=REVCMD_LISTENER
//
// defaults for mode "2" ('stateless' block mode)
//
// overall defaults
//
// default name of application
Application=
// default 'dispatch procedure' to run
Procedure=
// default user name
UserName=
// default password
Password=
// default engine name
Server=
// default startup flags for engine
StartupFlags=65
// default shutdown flags for engine
ShutdownFlags=1

```

OeTelnetServer.Jar

The OeTelnetServer.jar is used when the OETelnetServer service is not used. This file must be located in the same subdirectory in which OpenInsight is installed. This program provides the communication path between a telnet client (Hyper Terminal, Accuterm, ViaDuct) and OpenInsight.

The jar file uses the contents of the OETelnetServer.properties file, also found in the directory in which OpenInsight is installed, to establish the communications. A sample of an OETelnetServer.properties file is seen below:



```
OETelnetServer.properties - Notepad
File Edit Format View Help
#Unified telnet proxy properties
#Daemon configuration example.
#Created: 15/11/2004 wimpi
#Modified: 10/01/2005 bzs

#####
# Telnet daemon properties #
#####

#####
# Terminals section #
#####

# List of terminals available and defined below
terminals=vt100,ansi,windoof,xterm

# vt100 implementation and aliases
term.vt100.class=net.wimpi.telnetd.io.terminal.vt100
term.vt100.aliases=default,vt100-am,vt102,dec-vt100

# ansi implementation and aliases
term.ansi.class=net.wimpi.telnetd.io.terminal.ansi
term.ansi.aliases=color-xterm,xterm-color,vt320,vt220,linux,screen

# windoof implementation and aliases
term.windoof.class=net.wimpi.telnetd.io.terminal.windoof
term.windoof.aliases=

# xterm implementation and aliases
term.xterm.class=net.wimpi.telnetd.io.terminal.xterm
term.xterm.aliases=

#####
# shells section #
#####

# List of shells available and defined below
shells=RevShell

# shell implementations
shell.RevShell.class=net.wimpi.telnetd.shell.RevShell

#####
# Listeners section #
#####
#example: listeners=std,port2,port3
listeners=std

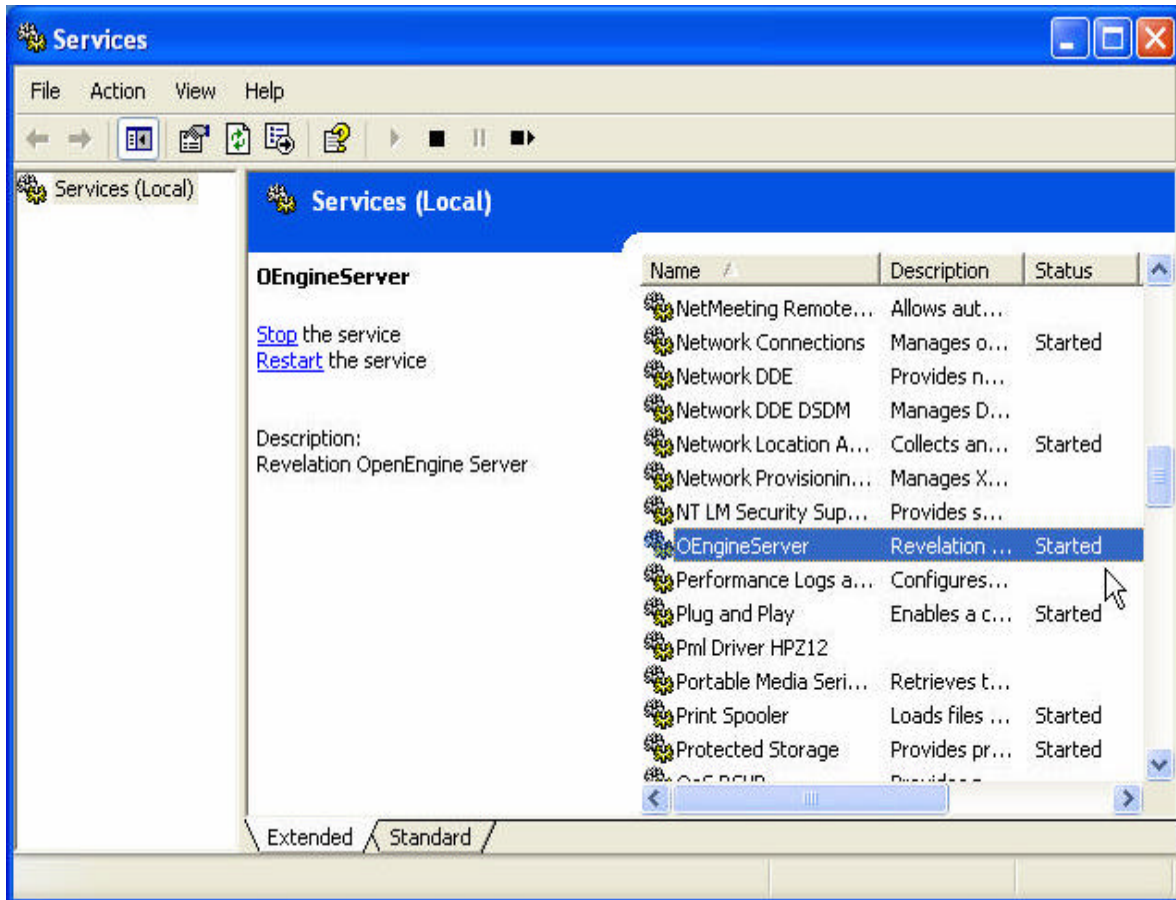
# std listener specific properties

#Basic listener and connection management settings
std.port=23
```


OEngineServer Service

The OpenEngine Server may be configured to run as a service on Windows PCs (NT or later). You may install the service by running the InstallApp-NT.bat batch file, located in the OESERVER subdirectory under the OpenInsight install directory.

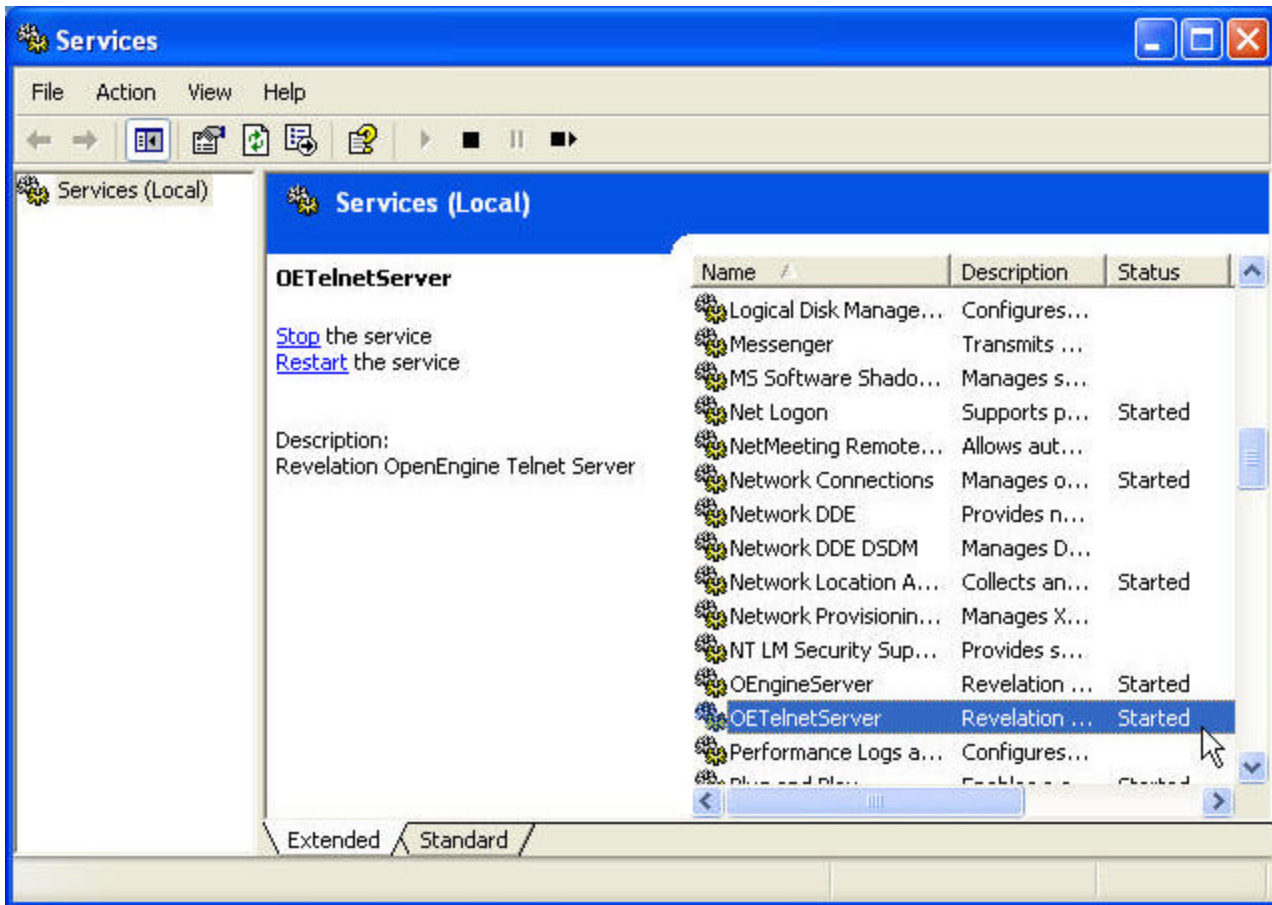
Once the OpenEngine Server has been installed as a service, it will automatically start up and shut down when your system starts up or shuts down. Note that, after the initial installation, you may need to restart your system for the service to be started.



OETelnetServer Service

The OpenEngine Telnet Server may be configured to run as a service on Windows PCs (NT or later). You may install the service by running the InstallTApp-NT.bat batch file, located in the OESERVER subdirectory under the OpenInsight install directory.

Once the OpenEngine Telnet Server has been installed as a service, it will automatically start up and shut down when your system starts up or shuts down. Note that, after the initial installation, you may need to restart your system for the service to be started.



Installing the Software

If the installation has gone correctly, all the required CTO software has been installed, with the exception of the Java runtime environment.

There should be a RevCmd.exe, as well as a login.txt and logout.txt file in a RevCMD subdirectory beneath the directory in which OpenInsight is installed.

There should be a file named oesocketserver.jar, oeconfig.lic, and one named eserver.cfg in the directory in which OpenInsight is installed.

There should be a file named oetelnetserver.jar and one named oetelnetserver.properties in the directory in which OpenInsight is installed.

There should be App.bat, InstallApp-NT.bat, UninstallApp-NT.bat, InstallTApp-NT.bat, and UninstallTApp-NT.bat files, and directories “conf” and “lib”, in an OEServer subdirectory beneath the directory in which OpenInsight is installed.

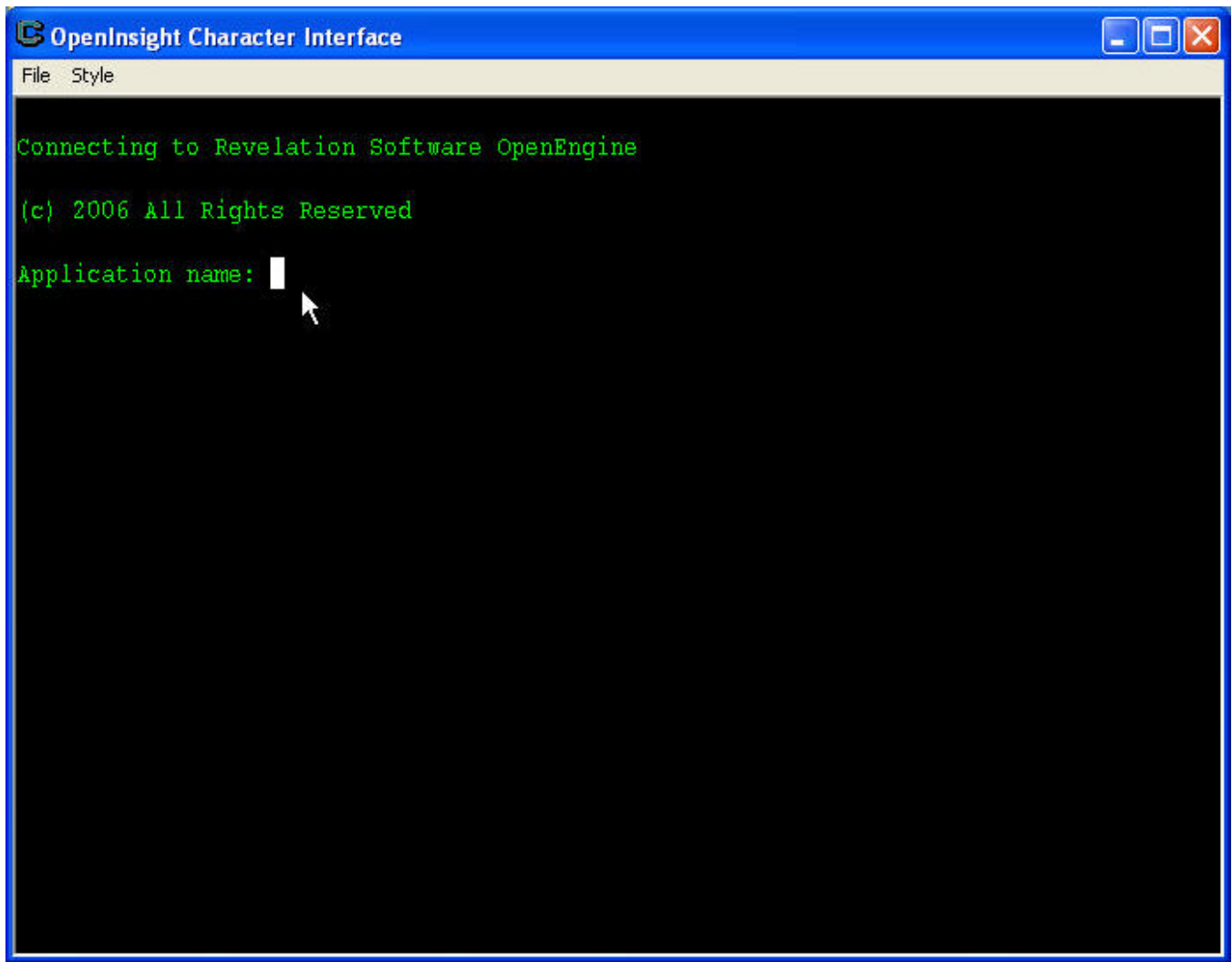
There should be an empty SPOOLER subdirectory, and an empty LOGS subdirectory, beneath the directory in which OpenInsight is installed.

The version of OpenInsight installed must be version 7.2 or higher.

Running the Software

In order to run the CTO, follow these steps:

1. If you are not running the OEngineServer as a service, you must launch the OEngineServer application manually with the following command from your OpenInsight directory: **java -jar oesocketserver.jar**
Note: Once the jar file is running, the command window in which it is running must remain open. Also note that no output normally appears in this window.
Note: If the jar fails to start try the following command: “C:\Program Files\Java\jre1.5.0_06\bin\java” -jar oesocketserver.jar
2. Launch RevCmd. From the main OpenInsight menu, select Tools, then Advanced, and then System Monitor. From the System Monitor, type in the command “EXEC CTO_STANDALONE_FORM”. The CTO_STANDALONE_FORM will automatically log you in as the current user in the current application. Alternatively, you can run the RevCmd executable from a command line (located in the RevCmd folder under your OpenInsight directory) or a shortcut. Be sure to have your “current directory” set to the revcmd subdirectory. You will be presented with the following screen:



3. Enter an application name of SYSPROG - and make sure it's in caps. In fact, for good measure, make sure the Caps Lock has been turned on when working in the CTO. You may also type in QUIT to terminate the CTO at this point.

4. Next, enter the UserName, which is also SYSPROG. You may also type in QUIT to terminate the CTO at this point.
5. There is no password, so just press the enter key. (**Note:** If you are using an evaluation copy of OpenInsight, you will here a beep. Look for the OpenInsight evaluation splash screen behind your CTO command window and click the OK button.)
6. You will be presented with a command prompt. Enter the command LISTFILES and press enter. If you get a screen similar to the following, you have successfully installed CTO:

```

OpenInsight Character Interface
File  Style

                                LIST OF ATTACHED TABLES
PAGE 1

TABLE NAME..... APPLICATION.... VOLUME.....
!SYSREPOSLOCKS      GLOBAL          RTP57*REVBOOT
ACCESSIBLE_COLUMNS  GLOBAL          SYSCOLUMNS*SYSCOLUMNS
AVERY_LABELS        GLOBAL          RTP57*REVBOOT
CUSTOM_LABELS       GLOBAL          RTP57*REVBOOT
DICT.AVERY_LABELS   GLOBAL          RTP57*REVBOOT
DICT.CUSTOM_LABELS  GLOBAL          RTP57*REVBOOT
DICT.LOG            GLOBAL          RTP57*REVBOOT
DICT.MD             SYSPROG        RTP57*DATAVOL
DICT.MD_MASTER      SYSPROG        RTP57*DATAVOL
DICT.SPOOLINFO      SYSPROG        RTP57*DATAVOL
DICT.SYSAPPS        GLOBAL          RTP57*REVBOOT
DICT.SYSCOLUMNS    GLOBAL          RTP57*REVBOOT
DICT.SYSDICT        GLOBAL          RTP57*REVBOOT
DICT.SYSLHGROUP     GLOBAL          RTP57*REVBOOT
DICT.SYSLHVERIFY    GLOBAL          RTP57*REVBOOT
DICT.SYSLOGINS      GLOBAL          RTP57*REVBOOT
DICT.SYSREPOS       GLOBAL          REPOS_BFS*REPOSITORY
DICT.SYSREPOSAPPNOTES GLOBAL          RTP57*REVBOOT

```

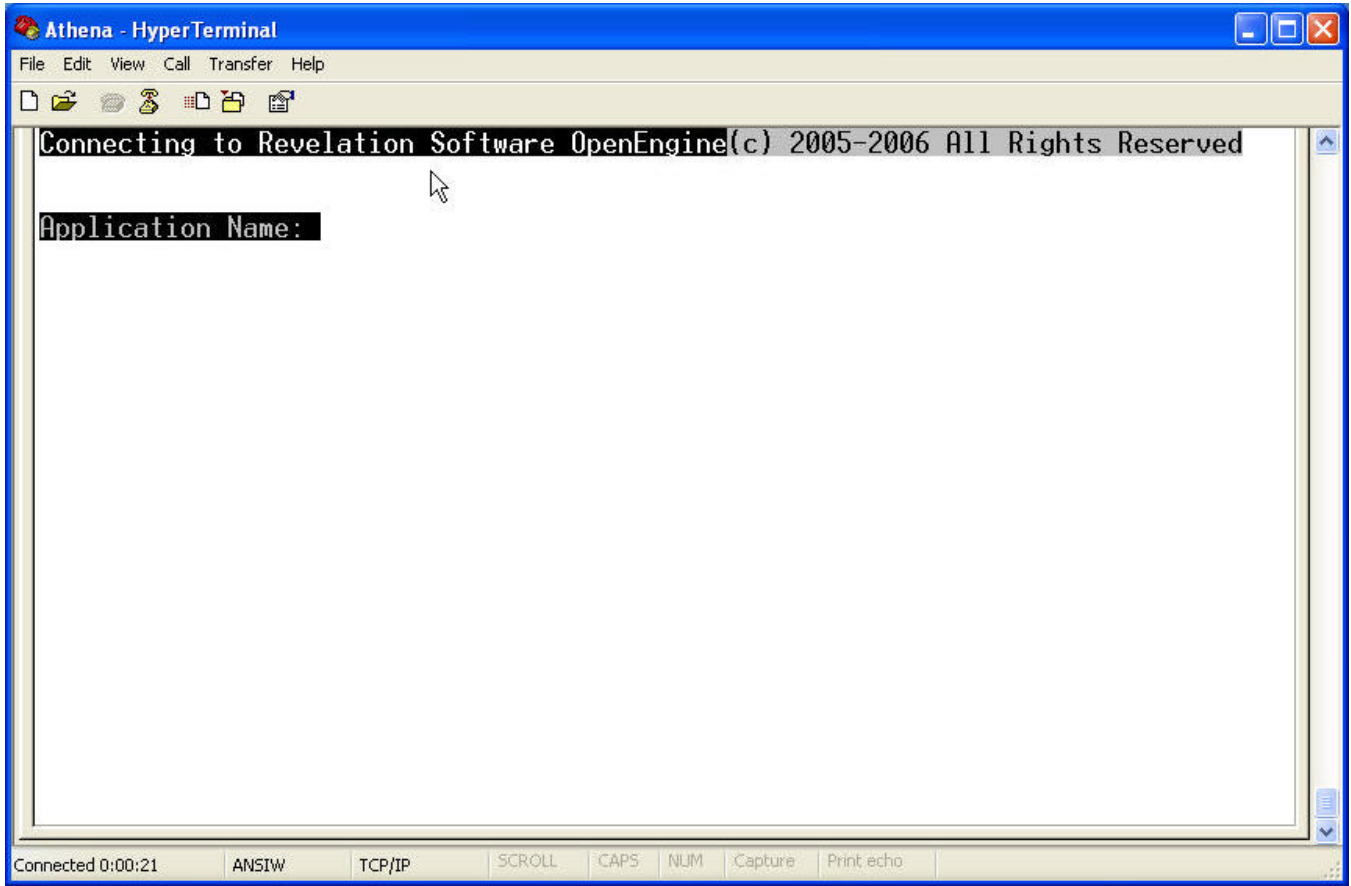
7. To exit from the CTO, you may type in “QUIT” at the command prompt. You may re-enter the

CTO by running the CTO_STANDALONE_FORM or REVCMD program so long as the OEngineServer is running (either manually or as a service). If you no longer want to run the CTO, or are about to shutdown your system, and you manually started the OEngineServer, you may terminate the OEngineServer by typing in <Ctrl>C in its command window.

In order to run the CTO using telnet, follow these steps.

8. If you are not running the OETelnetServer as a service, you must launch the OETelnetServer application manually with the following command from your OpenInsight directory: **java -jar oetelnetserver.jar**
Note: Once the jar file is running, the command window in which it is running must remain open. Also note that no output normally appears in this window.

Launch your terminal emulator using TCP/IP communicating on port 23. You can change the TCP/IP communications port by modifying the **OETelnetServer.properties** item found in your OpenInsight directory. You will be presented with the following screen:



REVELATION

S O F T W A R E

Revelation Software, Inc

99 Kinderkamack Road, First Floor
Westwood, NJ 07675
U.S.A
Toll Free: 800-262-4747
Phone: 201-594-1422
Fax: 201-722-9815
www.revelation.com

Revelation Software Ltd.

45 St Mary's Road
Ealing,
London, W5 5RG
U.K.
Phone: +44 0 208 912 1000
Fax: +44 0 208 912 1001
www.revsoft.co.uk

Software Australia Pty Ltd.

Suite 105
20 Dale St.
Brookvale, NSW 2100
Australia
Phone: +61 2 9939 6399
Fax: +61 2 9939 6366
www.revelationsoftware.com.au

Revelation Software is a division of Revelation Technologies, Inc.

Part No.125-825